

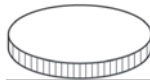


5 YEAR WARRANTY

1 YEAR WARRANTY

## Food Processing Disc Selection Guide

### Fine & Coarse Slicing Discs



Uses: perfect for cucumbers, carrots, green onions, mushrooms, pepperoni, cabbages, lettuces, olives, radishes, strawberries, apples, bananas, kiwi, cantaloupe and much more

Model #:	GSM5 / Anliker L	XL /XL-Star XXL/XXL Pro	GSM5 / Anliker L	XL /XL-Star XXL/XXL Pro	GSM5 / Anliker L	XL /XL-Star XXL/XXL Pro	GSM5 / Anliker L	XL /XL-Star XXL/XXL Pro	GSM5 / Anliker L	XL /XL-Star XXL/XXL Pro
Size of cut:	1 mm	(1/32")	2 mm	(5/64")	3 mm	(1/8")	4 mm	(5/32")	6 mm	(15/64")
Disc #:	F1-5	F1-7	F2-5	F2-7	G3-5	G3-7	G4-5	G4-7	G6-5	G6-7



Model #:	GSM5 / Anliker L	XL /XL-Star XXL/XXL Pro	GSM5 / Anliker L	XL /XL-Star XXL/XXL Pro	GSM5 / Anliker L	XL /XL-Star XXL/XXL Pro	GSM5 / Anliker L	XL /XL-Star XXL/XXL Pro	GSM5 / Anliker L	XL /XL-Star XXL/XXL Pro
Size of cut:	8 mm	(5/16")	10 mm	(3/8")	12 mm	(15/32")	16 mm	(5/8")	20 mm	(25/32")
Disc #:	G8-5	G8-7	G10-5	G10-7	G12-5	G12-7	N/A	G16-7	G20-5	N/A

### Julienne Discs



Uses: perfect for cucumbers, carrots, potatoes, zucchini, radishes, parsley, cilantro, beets, celery, peppers, onions, apples, mango, pears and much more

Model #:	GSM5 / Anliker L	XL /XL-Star XXL/XXL Pro	GSM5 / Anliker L	XL /XL-Star XXL/XXL Pro	GSM5 / Anliker L	XL /XL-Star XXL/XXL Pro	GSM5 / Anliker L	XL /XL-Star XXL/XXL Pro	GSM5 / Anliker L	XL /XL-Star XXL/XXL Pro
Size of cut:	1.5x2 mm (1/16"x5/64")		2 mm	(5/64")	3x2 mm	(1/8"x5/64")	8x2 mm	(5/16"x5/64")	12x2 mm	(15/32"x5/64")
Disc #:	S1.5-5	S1.5-7	S2-5	S2-7	S3-5	S3-7	S8-5	N/A	S12-5	N/A



Model #:	GSM5 / Anliker L	XL /XL-Star XXL/XXL Pro	GSM5 / Anliker L	XL /XL-Star XXL/XXL Pro	GSM5 / Anliker L	XL /XL-Star XXL/XXL Pro	GSM5 / Anliker L	XL /XL-Star XXL/XXL Pro	GSM5 / Anliker L	XL /XL-Star XXL/XXL Pro
Size of cut:	16x2 mm (5/8"x5/64")		4 mm	(5/32")	5x4 mm (3/16"x5/32")		6x4 mm (15/64"x5/32")			
Disc #:	S16-5	N/A	PA4-5	PA4-7	PA5-5	PA5-7	WS-5	WS-7		

PA4K & PA5K available with reinforced blades

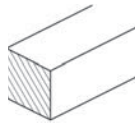


5 YEAR WARRANTY

1 YEAR WARRANTY

## Food Processing Disc Selection Guide

### Bâtonnets & French Fry Discs



Uses: perfect for potatoes, celery, squash, zucchini, carrots, apples, pears and much more

Model #:	GSM5 / Anliker L	XL /XL-Star XXL/XXL Pro	GSM5 / Anliker L	XL /XL-Star XXL/XXL Pro	GSM5 / Anliker L	XL /XL-Star XXL/XXL Pro	GSM5 / Anliker L	XL /XL-Star XXL/XXL Pro	GSM5 / Anliker L	XL /XL-Star XXL/XXL Pro
Size of cut:	6x7 mm (15/64"x9/32")		7x7 mm (9/32"x9/32")		8x7 mm (5/16"x9/32")		10x7 mm (3/8"x9/32")		10 mm	(3/8")
Disc #:	BT6-5	BT6-7	BT7-5	BT7-7	BT8-5	BT8-7	BT10-5	BT10-7	PF10-5	N/A

BT blades will always provide a curved result  
 PF blade will always provide a straight result



### Shaving & Specialty Shredding Discs



Uses: perfect for carrots, cucumbers, nuts, hard cheeses and much more

Uses: perfect for chocolate, hard cheeses and much more

Model #:	GSM5 / Anliker L	XL /XL-Star XXL/XXL Pro
Size of cut:	0.5 mm	(1/64")
Disc #:	HS-5	HS-7

Model #:	GSM5 / Anliker L	XL /XL-Star XXL/XXL Pro
Size of cut:	Curly 4x4 mm (5/32"x5/32")	
Disc #:	17-5	N/A



Uses: perfect for potatoes, cheese, bread, nuts, radishes, chocolate and much more

Model #:	GSM5 (only)	XL /XL-Star XXL/XXL Pro	GSM5 / Anliker L	XL /XL-Star XXL/XXL Pro	GSM5 / Anliker L	XL /XL-Star XXL/XXL Pro	GSM5 / Anliker L	XL /XL-Star XXL/XXL Pro	GSM5 / Anliker L	XL /XL-Star XXL/XXL Pro
Size of cut:	Tempura 8x8 mm (5/16"x5/16")		Fine nuts 2 mm (5/64")		Universal 2.5 mm (3/32")		Fondue flat 16 mm (5/8")		Fondue flat 12 mm (15/32")	
Disc #:	26-5	N/A	24-5	N/A	23-5	23-7	19-5	19-7	N/A	18-7



5 YEAR WARRANTY

1 YEAR WARRANTY

## Food Processing Disc Selection Guide

### Shredding Discs



Uses: perfect for potatoes, carrots, cheeses (soft), radishes, cabbages, nuts, apples and much more

Model #:	GSM5 / Anliker L	XL /XL-Star XXL/XXL Pro	GSM5 / Anliker L	XL /XL-Star XXL/XXL Pro	GSM5 / Anliker L	XL /XL-Star XXL/XXL Pro	GSM5 / Anliker L	XL /XL-Star XXL/XXL Pro	GSM5 / Anliker L	XL /XL-Star XXL/XXL Pro
Size of cut:	1.5 mm	(1/16")	1.8 mm	(5/64")	2 mm	(5/64")	2.25 mm	(3/32")	2.5 mm	(3/32")
Disc #:	13-5	N/A	12-5	12-7	11-5	11-7	10-5	N/A	9-5	9-7



Model #:	GSM5 / Anliker L	XL /XL-Star XXL/XXL Pro	GSM5 / Anliker L	XL /XL-Star XXL/XXL Pro	GSM5 / Anliker L	XL /XL-Star XXL/XXL Pro	GSM5 / Anliker L	XL /XL-Star XXL/XXL Pro	GSM5 / Anliker L	XL /XL-Star XXL/XXL Pro
Size of cut:	3 mm	(1/8")	3.8 mm	(5/32")	4.2 mm	(11/64")	5 mm	(3/16")	6 mm	(15/64")
Disc #:	7-5	7-7	6-5	N/A	4-5	4-7	3-5	3-7	2-5	2-7

Model #:	GSM5 / Anliker L	XL /XL-Star XXL/XXL Pro	GSM5 / Anliker L	XL /XL-Star XXL/XXL Pro	GSM5 / Anliker L	XL /XL-Star XXL/XXL Pro	GSM5 / Anliker L	XL /XL-Star XXL/XXL Pro
Size of cut:	7 mm	(9/32")	9 mm	(23/64")	11 mm	(7/16")	13 mm	(33/64")
Disc #:	1-5	1-7	0-5	0-7	00-5	00-7	000-5	000-7

### Grating Discs



Uses: perfect for hard cheese such Parmesan, Romano and much more

Hard cheese only.



Model #:	GSM5 / Anliker L	XL /XL-Star XXL/XXL Pro
Size of cut:	Fine powder	
Disc #:	14-5	14-7



5 YEAR WARRANTY

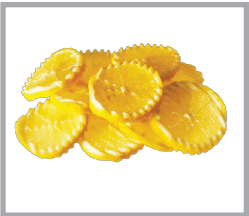
1 YEAR WARRANTY

## Food Processing Disc Selection Guide

### Wavy Slicing Discs

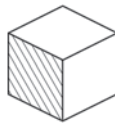


Uses: perfect for lemons, oranges, zucchini, potatoes, carrots and much more



Model #:	GSM5 / Anliker L	XL /XL-Star XXL/XXL Pro	GSM5 / Anliker L	XL /XL-Star XXL/XXL Pro
Size of cut:	Wavy cut 5 mm (3/16")		Wavy cut 7 mm (9/32")	
Disc #:	SU5-5	SU5-7	SU7-5	SU7-7

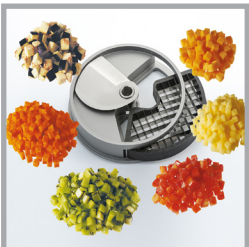
### Dicing Discs



Uses: perfect for potatoes, tomatoes, cucumbers, carrots, onions, peppers, apples, bananas, cantaloupe, kiwi, strawberries and much more

Model #:	GSM5 / Anliker L	XL /XL-Star XXL/XXL Pro	GSM5 / Anliker L	XL /XL-Star XXL/XXL Pro	GSM5 / Anliker L	XL /XL-Star XXL/XXL Pro	GSM5 / Anliker L	XL /XL-Star XXL/XXL Pro	GSM5 / Anliker L	XL /XL-Star XXL/XXL Pro
Size of cut:	6x6x8 mm (1/4"x1/4"x5/16")		8x8x8 mm (5/16"x5/16"x5/16")		10x10x10 mm (3/8"x3/8"x3/8")		14x14x14 mm (9/16"x9/16"x9/16")		20x20x20 mm (25/64"x25/64"x25/64")	
Disc #:	W6-5	W6-7	W8-5	W8-7	W10-5	W10-7	W14-5	W14-7	W20-5	N/A

<b>GSM5/Anliker L</b>	W14 & W20 are only recommended for soft products
<b>XL/XL Star</b>	W blades are suggested for soft products and WK blades for harder products
<b>XXL/XXL Pro</b>	WK blades are not available



Model #:	XL / XL-Star	XL / XL-Star	XL / XL-Star	XL / XL-Star
Size of cut:	8x8x10 mm (5/16"x5/16"x3/8")	10x10x10 mm (3/8"x3/8"x3/8")	14x14x10 mm (9/16"x9/16"x3/8")	24x24x10 mm (29/32"x29/32"x3/8")
Disc #:	WK8-CUBINGGRID-7	WK10-CUBINGGRID-7	WK14-CUBINGGRID-7	WK24-CUBINGGRID-7



WK blade set-up required = WK-BODY-7 + WK-CUBINGKNIFE-7 + WK#-CUBINGGRID-7



5 YEAR WARRANTY

1 YEAR WARRANTY

## Food Processing Disc Selection Guide

### Tomato Slicing Discs

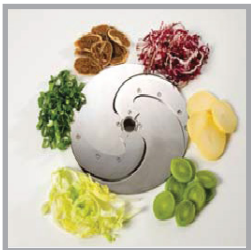


Uses: perfect for tomatoes, iceberg lettuce, pineapples, oranges, lemons and much more



Model #:	GSM5 / Anliker L	XL /XL-Star XXL/XXL Pro
Size of cut:	5 mm (3/16")	
Disc #:	TO-5	TO-7

### Sickle Blades



Uses: perfect for cabbages, potatoes, onions, lemon grass, leeks, dried fruits, mushrooms and much more

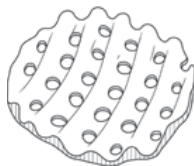
Model #:	GSM5 / Anliker L	XL /XL-Star XXL/XXL Pro	GSM5 / Anliker L	XL /XL-Star XXL/XXL Pro	GSM5 / Anliker L	XL /XL-Star XXL/XXL Pro	GSM5 / Anliker L	XL /XL-Star XXL/XXL Pro	GSM5 / Anliker L	XL /XL-Star XXL/XXL Pro	GSM5 / Anliker L	XL /XL-Star XXL/XXL Pro
Size of cut:	1.5 mm (1/16")		2.5 mm (3/32")		3.5 mm (9/64")		4.5 mm (11/64")		5.5 mm (7/32")		6.5 mm (1/4")	
Disc #:	SM1.5-5	SM1.5-7	SM2.5-5	SM2.5-7	SM3.5-5	N/A	SM4.5-5	SM4.5-7	SM5.5-5	N/A	SM6.5-5	N/A

(for GSM5 & XL-Star only)

### Gaufrettes Discs



Uses: perfect for potatoes, zucchini, beetroots, radishes, carrots and much more



Model #:	GSM5	XL-Star / XXL Pro	GSM5	XL-Star / XXL Pro	GSM5	XL-Star / XXL Pro	GSM5	XL-Star / XXL Pro
Size of cut:	2 mm (5/64")		4 mm (5/32")		6 mm (15/64")		8 mm (5/16")	
Disc #:	PG2-5	N/A	PG4-5	PG4-7	PG6-5	N/A	N/A	PG8-7



5 YEAR WARRANTY

1 YEAR WARRANTY

## Food Processing Disc Selection Guide

(for GSM5 & XL-Star only)

### Brunois Discs



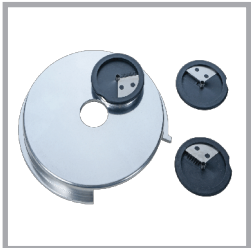
Uses: perfect for celery, onions, cucumbers, zucchini, chili, carrots, radishes, garlic and much more



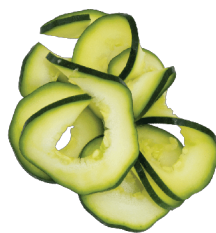
Model #:	GSM5	XL-Star / XXL Pro	GSM5	XL-Star / XXL Pro	GSM5	XL-Star / XXL Pro	GSM5	XL-Star / XXL Pro
Size of cut:	2x2x2 mm (5/64"x5/64"x5/64")		3x3x2 mm (1/8"x1/8"x5/64")		4x4x2 mm (5/32"x5/32"x5/64")		5x5x4 mm (3/16"x3/16"x5/32")	
Disc #:	BR2-5	N/A	BR3-5	BR3-7	BR4-5	BR4-7	BR5-5	BR5-7

(for GSM5 only)

### Vegetable Spaghetti Cutter



Uses: ideal for potatoes, sweet potatoes, carrots, radishes, zucchini



Model #:	GSM5	XL-Star / XXL Pro
Size of cut:	Vegetable Spaghetti Cutter: Spaghetti 2 mm & 3 mm, Garland cut	
Disc #:	SP-5	N/A

Which one do you prefer?



**BRUNNER ANLIKER**  
swiss  made

Competitor



**BRUNNER ANLIKER**  
swiss  made



Competitor